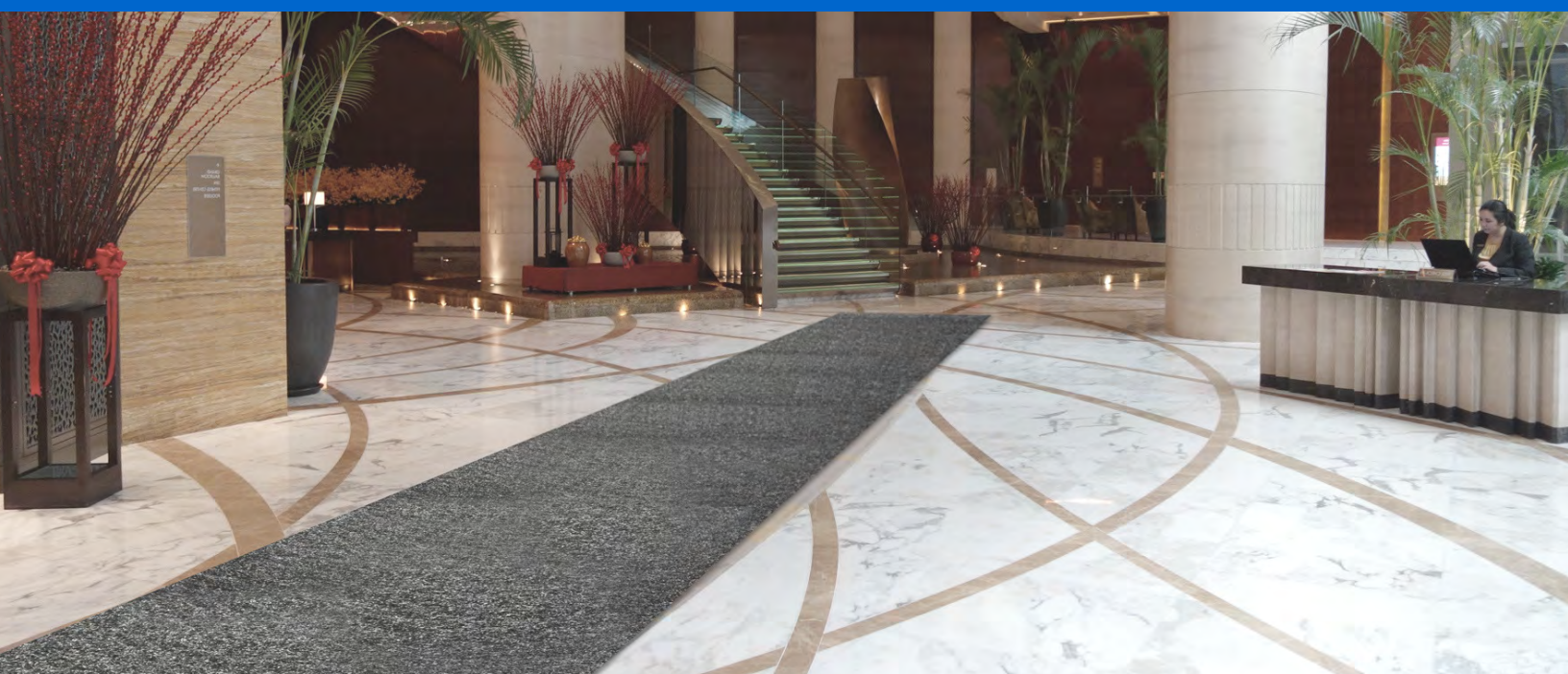




*Slipfyter*<sup>TM</sup>  
by Spilfyter®

## TRACTION MATS

An easy, durable solution to combat slips, trips & falls  
in a variety of locations



# Slipfyter™

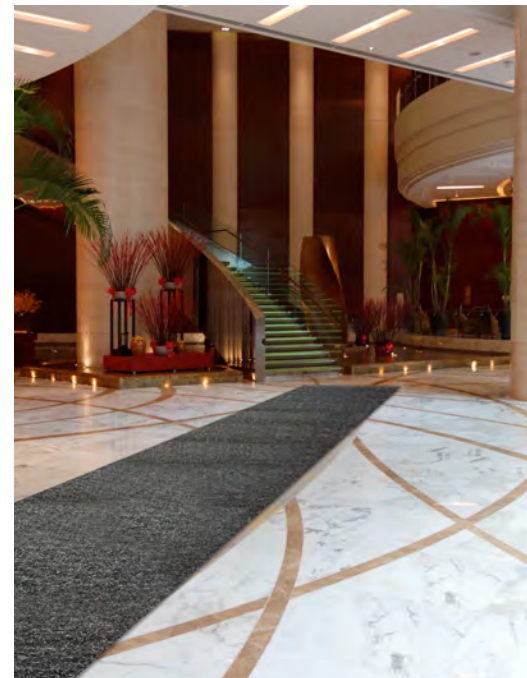
by Spilfyter®

## TRACTION MATS

- Slipfyter™ Traction Mats are an easy, durable solution to combat slips, trips & falls in a variety of locations.
- Can be easily peeled back up and repositioned as needed.
- Stands up to heavy foot or vehicle traffic, to include fork trucks.
- Easy to use: roll out continuous walk-off coverage for entrances and walkways with no gaps, ripples or overlaps that can be slip, trip or fall hazards.
- Absorbs a wide variety of oil and water-based spills.
- Durable top layer can be vacuummed, swept with a broom or mopped - allowing the product to stay in use longer!
- ADA compliant for wheelchairs and walkers.
- Only a fraction of the weight of rubber-backed mats: no more back strain when you change your mats.



**Top layer is a super-strong durable nonwoven material that aids in foot traction.**



**Cut to size and use to line drawers in tool chests or other work areas**



**FRED SAYS "GET CREATIVE!"**

**Create custom-sized traction mats for transition areas and problem spots where leaks or spills may be present.**

# Slipfyer™

by Spilfyer®

## TRACTION MATS

ORDINARY RUGS AND MATS CAN  
WRINKLE AND CREASE, CAUSING  
THEM TO BE SLIP, TRIP & FALL  
HAZARDS THEMSELVES!



Slipfyer™ Traction Mats lay  
completely flat on floors and  
surfaces



FRED ASKS: "ARE YOU IN COMPLIANCE?"  
OSHA 29 CFR 1910.22(a)(2) states that  
"Floors in the workplace should be,  
"maintained in a clean and, so far as  
possible, a dry condition."



# Slipfyer™

by Spilfyer®

## PRODUCT SPECIFICATIONS:

SKU	STM-9700GRY
Description	Universal Traction Mat Medium Weight
Roll Width (in)	34
Pad Width (cm)	86
Pad Length (ft)	100
Pad Length (m)	30
Pack Count	1
Color	Gray
Pad Bonding	N/A
Ply Count/Layers	2
Perforations	No
Total Absorbency (Gal)	21
Total Absorbency (Ltr)	79
Master Packaging	Printed Box
Cases Per Layer	9
Cases High	2 + 3 top load
Pallet Config	21
Cube/Package Width	14.25in / 36cm
Cube/Package Length	14.25in / 36cm
Cube/Package Height	34.5in / 87cm
Package Cube	4.0541 ft3 / 0.12 m3
Case Weight (lb)	30.0
Case Weight (Kg)	16.0
NMFC	149265-5
Ship Class	125
Full Pallet Dimensions + Weight	48 x 43 x 89; 690lbs / 124cm x 102cm x 226cm; 272kg

SKU	STM-9800GRY
Description	Universal Traction Mat Medium Weight
Roll Width (in)	34
Pad Width (cm)	86
Pad Length (ft)	50
Pad Length (m)	15
Pack Count	1
Color	Gray
Pad Bonding	N/A
Ply Count/Layers	2
Perforations	No
Total Absorbency (Gal)	10.5
Total Absorbency (Ltr)	40
Master Packaging	Printed Box
Cases Per Layer	20
Cases High	2 + 10 top load
Pallet Config	50
Cube/Package Width	10.25in / 23cm
Cube/Package Length	10.25in / 23cm
Cube/Package Height	34.5in / 87cm
Package Cube	2.0976 ft3 / 0.0593 m3
Case Weight (lb)	15.0
Case Weight (Kg)	7.0
NMFC	149265-5
Ship Class	125
Full Pallet Dimensions + Weight	51 x 41 x 96; 810lbs / 130cm x 104cm x 244cm; 190kg

SKU	STM-9900GRY
Description	Universal Traction Mat Medium Weight
Roll Width (in)	34
Pad Width (cm)	86
Pad Length (ft)	25
Pad Length (m)	7
Pack Count	1
Color	Gray
Pad Bonding	N/A
Ply Count/Layers	2
Perforations	No
Total Absorbency (Gal)	5.8
Total Absorbency (Ltr)	22
Master Packaging	Printed Box
Cases Per Layer	42
Cases High	2 + 18 top load
Pallet Config	102
Cube/Package Width	6.5in / 17cm
Cube/Package Length	6.5in / 17cm
Cube/Package Height	34.5in / 87cm
Package Cube	0.8440 ft3 / 0.0525 m3
Case Weight (lb)	7.5
Case Weight (Kg)	3.5
NMFC	149265-5
Ship Class	125
Full Pallet Dimensions + Weight	48 x 41 x 94; 825lbs / 121cm x 104cm x 239cm; 190kg

